

# Seward Hwy MP 17-22.5 Rehabilitation



August 20, 2015

The Alaska Department of Transportation and Public Facilities (DOT&PF), in cooperation with the Federal Highway Administration (FHWA) will rehabilitate and improve the safety of 5.5 miles of the Seward Highway between the communities of Moose Pass and Seward, Alaska.

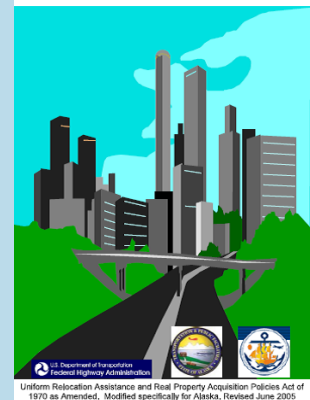
## Project Update: Federal Funds Secured

DOT&PF has secured FHWA funding that will allow us to move ahead with the next phase of the project, property appraisal and acquisition. This phase is anticipated to take about two years to complete.

The project's design is 75% complete ([see the 75% design plan set here](#)) meaning that engineers have verified the roadway's traffic layout (lane widths, striping, access, etc.) and determined the space needed for the proposed improvements. In some cases, the space needed is outside the existing Right of Way (ROW) and partial or complete property acquisitions are required.

All impacted property owners will be contacted directly by DOT&PF ROW Agents. The DOT&PF follows a comprehensive Policy and Procedures Manual when property acquisitions are necessary for a project. You can read more about DOT&PF's ROW practices at the [department's website](#).

### Acquiring Real Property for Federal and Federal-Aid Programs and Projects



DOT&PF ROW Brochure,  
[click here to view](#)

## What's Next

During the next two years, the engineering team will finalize the project design to 95% complete. Following final design, DOT&PF will select a construction contractor to build the project.

Construction will begin in 2018, pending the availability of funding and other factors. Watch for additional opportunities to engage with the project team prior to construction; feel free to contact us at [info@sewardhighway17to22.com](mailto:info@sewardhighway17to22.com) with any questions or comments.



Project schedule - [read more about the project timeline here](#)

\*\*\*Note: Joining our e-mail list is a great way to stay up-to-date and to learn about opportunities to be involved in the process. **Please forward this message to others that may have an interest.**

## [JOIN OUR MAILING LIST](#)

For more information, visit [www.sewardhighway17to22.com](http://www.sewardhighway17to22.com), email us at [info@sewardhighway17to22.com](mailto:info@sewardhighway17to22.com) or contact Carla Smith, P.E. at 907-269-0544 or Matt Dietrick, Environmental Analyst, at 907-269-0531.

The DOT&PF operates Federal Programs without regard to race, color, national origin, sex, age, or disability. Full Title VI Nondiscrimination Policy: [dot.alaska.gov/tvi\\_statement.shtml](http://dot.alaska.gov/tvi_statement.shtml). To file a complaint go to: [dot.alaska.gov/cvlrts/titlevi.shtml](http://dot.alaska.gov/cvlrts/titlevi.shtml).

The DOT&PF complies with Title II of the Americans with Disabilities Act of 1990. Individuals with disabilities who may need auxiliary aids, services, and/or special modifications to participate in this project should contact Allison Biastock at 907-644-2167 to make necessary arrangements. Individuals with a hearing impairment can contact Relay Alaska at 711 for assistance.

Copyright © 2014. All Rights Reserved.

[Forward this email](#)



This email was sent to [info@sewardhighway17to22.com](mailto:info@sewardhighway17to22.com) by [info@sewardhighway17to22.com](mailto:info@sewardhighway17to22.com) | [Update Profile/Email Address](#) | Rapid removal with [SafeUnsubscribe™](#) | [About our service provider.](#)



Try it FREE today.

HDR on behalf of the Alaska Department of Transportation and Public Facilities | 2525 C Street, #305 | Anchorage | AK | 99503